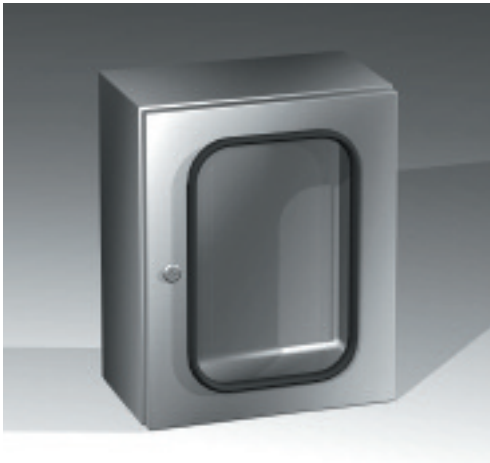




stainless steel boxes with glazed door



STAINLESS STEEL BOX WITH GLAZED DOOR - CE STPX

characteristics

Enclosure manufactured in AISI 304 material (AISI 316 on request).
Door manufactured in AISI 304 material with plexiglas viewing window. AISI 316 on request.
Mounting plate manufactured in 2.5mm zinc-plated steel.
Hinges in stainless steel.

composition

Box complete with:

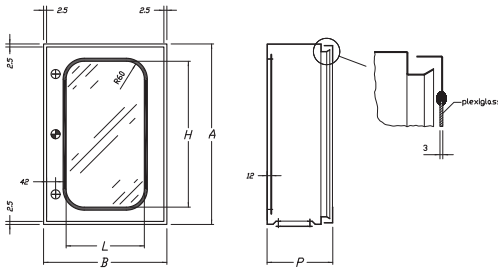
- mounting plate
- gland plate with sealing gasket
- lock system with body in zinc alloy
- ø 3 mm double bar key
- screws for earthing and mounting accessories.

conformity and approval



protection degree

- IP 55 complying with EN50298; EN60529
- type 12 complying with UL508A; UL50
- impact resistance IK10 complying with EN50298; EN50102.



⊕ central lock for A<600

dimensions					code	
B	A	L	H	P	mod.	art.
300	400	160	285	200	STPX3	420
400	500	260	385	200	STPX4	520
400	600	260	485	200	STPX4	620
500	700	360	585	250	STPX5	725
600	800	460	685	200	STPX6	820
600	800	460	685	250	STPX6	825

To order a stainless steel enclosure in high grade AISI 316, please add H to the catalogue number.
E.g.: CESTPX4-620H.

stainless steel accessories



inner door kit

STAINLESS STEEL INNER DOOR STP01 ... X

characteristics

Frame and door manufactured from 1.5mm AISI 304 material (AISI 316 on request).

composition

Supply includes:

- frame
- door
- lock system with body in zinc alloy
- ø 3 mm double bar key
- mounting accessories.

protection degree

- external: same of the box
- internal: IP 20.

dimensions		code	
L	H	mod.	art.
300	400	STP01	34X
400	500	STP01	45X
400	600	STP01	46X
500	700	STP01	57X
600	800	STP01	68X

To order a stainless steel enclosure in high grade AISI 316, please add H to the catalogue number.
E.g.: STP01-46XH.



stainless steel accessories

STAINLESS STEEL MODULAR KIT

characteristics

Frame manufactured from 1.5mm AISI 304 material.
 Front panels manufactured from 1.5mm AISI 304 material.
 AISI 316 available on request.

composition

Supply includes:

- frame
- front panel with modular slot complete with mounting accessories and captive screws
- zinc plated DIN rails
- mounting accessories.

protection degree

- external: same of the box
- internal: IP 1X.



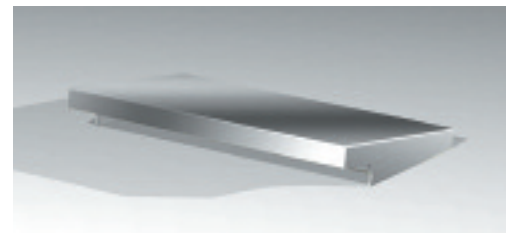
dimensions		code	
width	depth	mod.	art.
400	600	MDSTX4	600
600	800	MDSTX6	800

To order a stainless steel enclosure in high grade AISI 316, please add H to the catalogue number.
 E.g.: MDTX4-600H.

STAINLESS STEEL RAIN CANOPY TTX

To protect against direct water entry.
 Manufactured from 1.5mm AISI 304 stainless steel material.
 AISI 316 available on request.

For outdoor installations, the cabinets can be supplied with a stainless steel roof cover.



dimensions		code	
width	depth	mod.	art.
400	200	TTX1	04
500	200	TTX1	05
500	250	TTX2	05
600	250	TTX1	06
800	300	TTX2	08

To order a stainless steel enclosure in high grade AISI 316, please add H to the catalogue number.
 E.g.: TTX1-04H.

STAINLESS STEEL WALL MOUNTING BRACKETS

SDWCX

Manufactured in 2.5mm stainless steel.
 Supply includes: 4 pieces.

code	
mod.	art.
SDWCX	010

