

Junction boxes with flanged cover or fixed by screws

EJB



Installation:

Zone 1-2 (EN 60079-10)
CLASS 1 DIVISION 1-2 (NEC)
CLASS 2 DIVISION 1-2 (NEC)

Gas groups:

IIA-IIB (CENELEC EN 50.014)
GROUPS C-D-E-F-G (NEC)

Surface temperature:

TS=100°C (EN 50.014)

Protection type:

EEx-dIIC (EN 50.014 – EN 50.018)

Protection degree:

IP66 (EN 60.529)

Execution	Equipment	Certificate
EEx-d IIB T6+T3 IP65	Supply unit	CESI 03 ATEX 053
EEx-d IIB T6 IP65	Branching unit	CESI 02 ATEX 057
EEx-d [ia] IIB T6 IP65	Branching unit	CESI 02 ATEX 057
EEx-d [ib] IIB T6 IP65	Branching unit	CESI 02 ATEX 057
EEx-d IIB T6+T3 IP65	Control and signalling unit	CESI 02 ATEX 076
EEx-d [ia] IIB T6+T3 IP65	Control and signalling unit	CESI 02 ATEX 076
EEx-d [ib] IIB T6+T3 IP65	Control and signalling unit	CESI 02 ATEX 076

Standard materials:

- Marine grade copper free aluminium
- Stainless steel external screws
- O-Ring gasket on cover (on request)

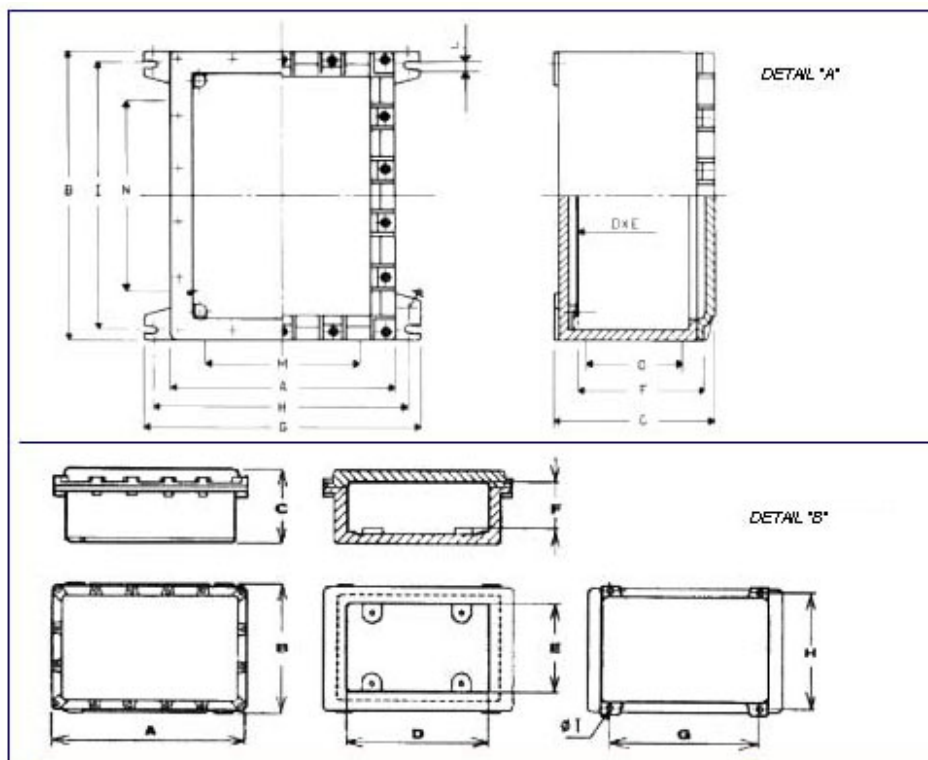
Junction boxes with flanged cover or fixed by screws

EJB

TECHNICAL CHARACTERISTICS:

TYPE	DIMENSIONS (mm)													Weight
	Outside			Inside			Overall & Fastening				Space for Hubs			
Detail A	A	B	C	D	E	F	G	H	I	L	M	N	O	KG
EJB-1	210	210	185	150	150	145	270	240	182	9	140	140	85	8.0
EJB-2	255	365	195	190	300	145	340	300	325	10	180	300	90	16.0
EJB-3	310	470	210	240	400	164	395	355	432	10	220	360	90	23.0
EJB-4	380	495	270	300	410	215	470	430	450	10	300	20	140	33.0
EJB-5	180	480	190	110	410	145	265	220	445	10	120	400	140	15.0
EJB-51	180	580	190	110	505	145	265	220	545	10	120	500	150	20.0
EJB-6	415	610	325	330	525	260	510	455	560	10	300	520	180	65.0
EJB-61	415	610	225	330	525	160	510	455	560	10	300	520	100	57.0
EJB-C237	165	235	155	105	175	115	235	200	207	9	110	190	60	6.0
EJB-TR1	200	325	195	135	255	155	270	235	290	9	140	260	90	11.0
Detail B	A	B	C	D	E	F	G	H	I	L	M	N	O	KG
EJB-20	920	685	300	800	550	240		641	697	13				124.0
EJB-20A	920	685	440	800	550	380		641	697	13				138.0

REFERENCE DETAILS:



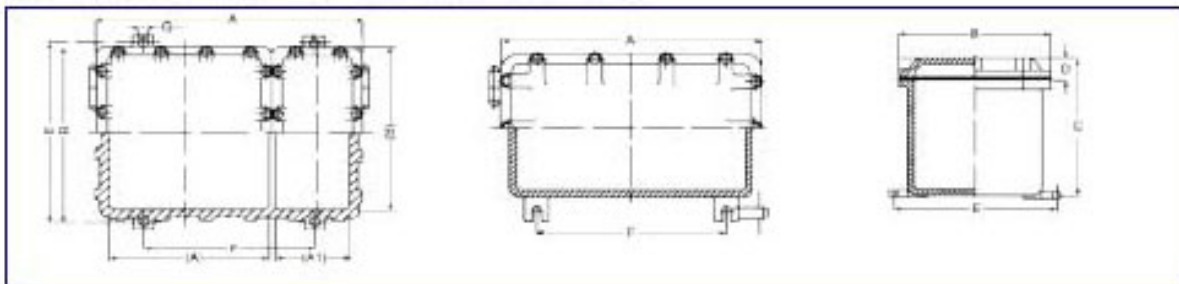
Junction boxes with flanged cover or fixed by screws

EJB

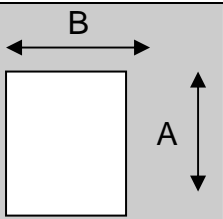
TECHNICAL CHARACTERISTICS:

TYPE	DIMENSIONS (mm)										
	OUTSIDE				INSIDE			FASTENING			WEIGHT
	A	B	C	D	(A)+(A1)	(B)	(C)	E	F	G	KG
EJB-11	175	175	119	15	115	115	94	78	165	12	4.2
EJB-12	175	111	106	17	145	81	73	82	205	10	3.0
EJB-123	300	111	104	17	270	81	76	81	330	10	4.5
EJB-13	260	200	81	16	200	140	50	195	162	12	5.5
EJB-15	240	150	75	15	200	110	60	-	-	-	10.0
EJB-16	165	115	52	10	135	85	40	-	175	8	2.0
EJB-21	280	240	173	23	220	180	130	230	162	12	10.5
EJB-23	310	260	195	30	250	200	150	250	198	12	15.0
EJB-30	410	310	165	40	350	250	110	300	298	12	17.0
EJB-31	410	310	250	40	350	250	195	300	298	12	20.5
EJB-41	440	210	125	20	410	180	90	180	470	12	12.0
EJB-51B	560	360	250	35	500	300	200	360	360	13	36.5
EJB-61B	660	460	350	35	600	400	300	455	500	13	57.0
EJB-63	660	460	220	35	600	400	180	455	500	13	42.0
EJB-63/2	660	460	237	35	480+185	400	180	480	435	16	53.0
EJB-64	660	460	195	35	600	400	145	455	500	13	39.0

REFERENCE DETAILS:



APPLICABLE GLASS WINDOWS ON COVERS:

		DIMENSIONS (mm)								
TYPE		F1	F2	F3	F4	F5	F6	F7	F8	F9
	A	60	75	110	150	150	300	300	300	450
	B	60	75	150	75	150	75	150	300	300