

CE ST range of wall mounting enclosures is one of the highest quality of metallic enclosures available on the market. A well engineered project, which has been continuously updated and improved, has allowed the creation of a wide range of possible variations.

The actual CE ST range includes the following versions:

- 32 sizes manufactured from Fe40 sheet steel with blank door
 - 19 sizes with glazed doors
- in both single and double door versions.

CE ST range main characteristic is solidity obtained thanks to the considerable thickness of the sheet steel to the high technology and automation used for products and to the proper mix of the components.

Top quality materials are used:

- high performance technopolymers are used for locking systems and hinge pins (UL94VO selfextinguishing material)
- zinc alloy hinges
- thermosetting epoxy polyester powder coating for painting
- two components polyurethane sealing gasket applied by a robot
- sheet steel.

Further features of the CE ST range are the 4 large size gland plates:

- a plate with removable flush plate
- removable twinting support rails to be mounted in the inner part of the door
- door reversibility obtained thanks to the screwed hinges
- gasket protection clip for transport and storage.

Four or six studs are welded inside the boxes (with the exception of 150mm depth enclosure), allowing the mounting of both an inner door, a modular chassis, a rack frame or the mounting plate adjustment system. All the accessories are supplied separately so that to increase flexibility thus optimizing finish products inventory. CE STP boxes have the same characteristics.

They have a 3mm thick glazed door fitted with the care that CE-TEK puts into all its products.

Terminal boxes

Produced from a single sheet of material, these boxes have an external edge with gutter profile preventing entry of dust. To meet different customers requirements, the boxes are offered with mounting plates or DIN profiles. The lid is fixed with captive screws. Hinges can also be fitted. No drilling is necessary.

Features at a glance

- IP 65 single door, IP 55 double door
- over 41 sizes plain door/window door
- mounting plates, gland plate/s supplied as standard
- large range of standard accessories
- modifications available on short lead times.



150mm depth boxes



Characteristics

Enclosure and door manufactured from 1.5mm sheet steel.
Flat mounting plate manufactured from 2.5mm.

Paint finish

CE-TEK standard epoxy polyester powder coating.
Enclosure and door RAL 7032 textured finish.

Supply includes

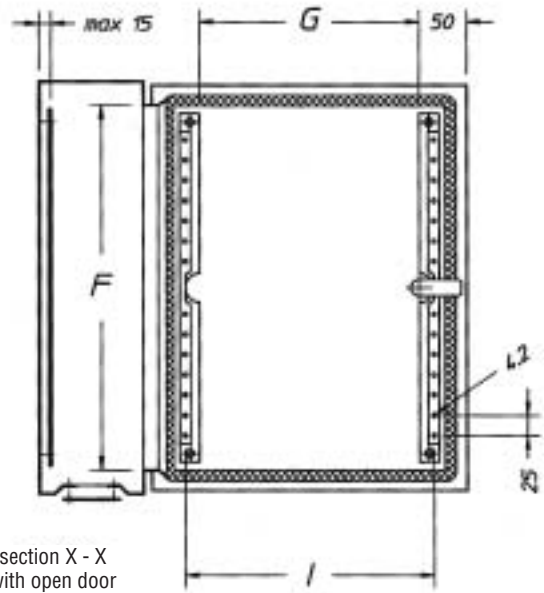
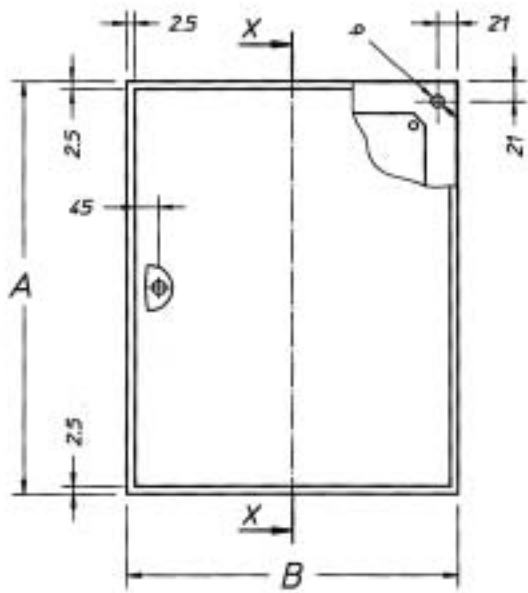
- box
- 2 zincpassivated rails to be fixed on the door
- mounting plate
- gland plate with sealing gasket
- locking system with Ø 3mm double bar key
- screws for earthing
- mounting accessories.

Conformity and approval

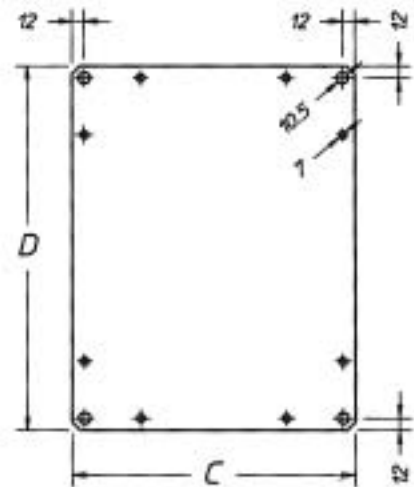
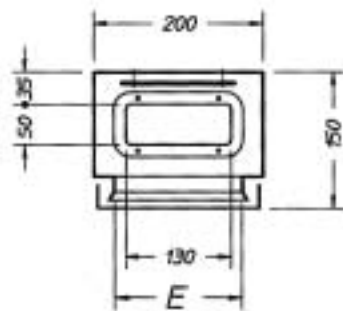
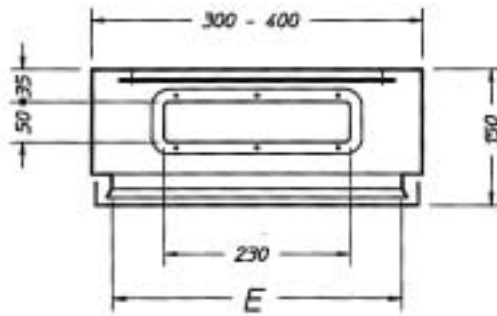


Protection degree

- IP 65 complying with EN50298; EN60529
- type 12, 4, 4X complying with UL508A; UL50
- impact resistance IK10 complying with EN500298; EN50102.



section X - X
with open door



code		B	A	C	D	E	F	G	I	weight kg
mod.	art.									
CEST2	315	200	300	150	250	154	254	90	*	6
CEST3	315	300	300	250	250	254	254	190	226	7,5
CEST3	415	300	400	250	350	254	354	190	226	9,5
CEST3	515	300	500	250	450	254	454	190	226	11,5
CEST4	315	400	300	350	250	354	254	290	326	9,5
CEST4	515	400	500	350	450	354	454	290	326	13

*B=200 M6 studs welded only on the hinge side.



200mm depth boxes



Characteristics

Enclosure and door manufactured from 1.5mm sheet steel.
Flat mounting plate manufactured from 2.5mm.

Paint finish

CE-TEK standard epoxy polyester powder coating.
Enclosure and door RAL 7032 textured finish.

Supply includes

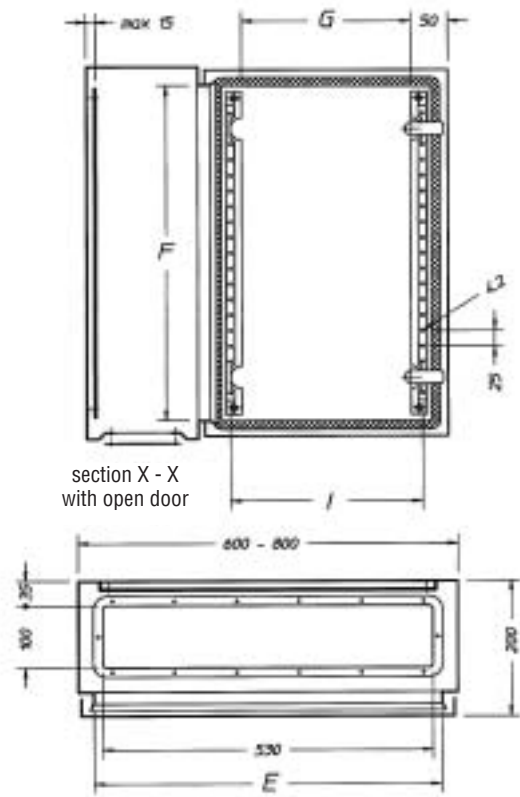
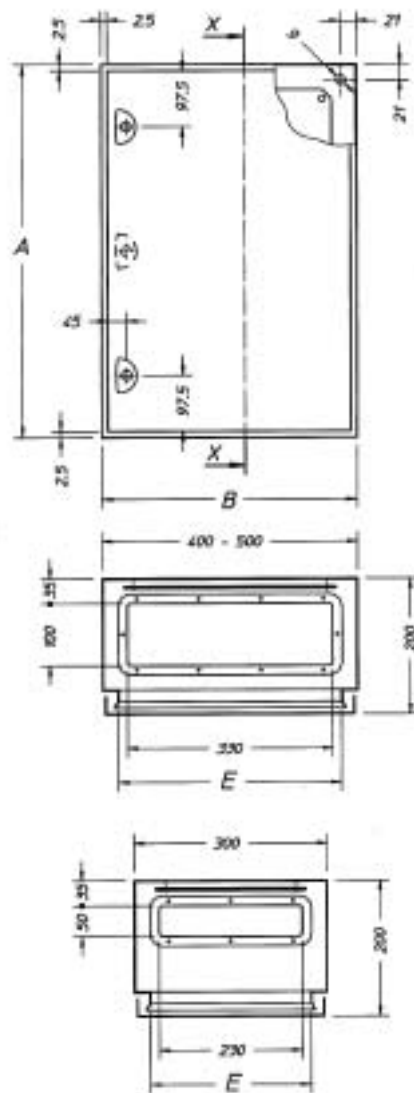
- box
- 2 zincpassivated rails to be fixed on the door
- mounting plate
- gland plate with sealing gasket
- locking system with Ø 3mm double bar key
- screws for earthing
- mounting accessories.

Conformity and approval



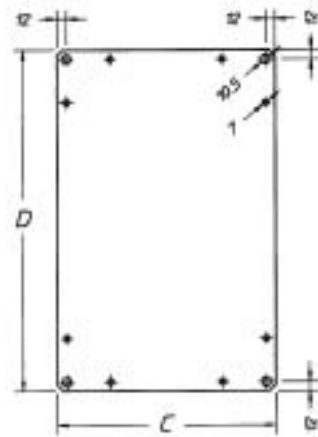
Protection degree

- IP 65 complying with EN50298; EN60529
- type 12, 4, 4X complying with UL508A; UL50
- impact resistance IK10 complying with EN500298; EN50102.



section X - X
with open door

[☒] central lock for A<600



code		B	A	C	D	E	F	G	I	weight kg
mod.	art.									
CEST3	420	300	400	250	350	254	354	190	226	11
CEST3	520	300	500	250	450	254	454	190	226	13
CEST4	320	400	300	350	250	354	254	290	326	11
CEST4	420	400	400	350	350	354	354	290	326	13,5
CEST4	520	400	500	350	450	354	454	290	326	15,5
CEST4	620	400	600	350	550	354	554	290	326	18
CEST5	520	500	500	450	450	454	454	390	426	18,5
CEST5	720	500	700	450	650	454	654	390	426	24,5
CEST6	420	600	400	550	350	554	354	490	526	18
CEST6	620	600	600	550	550	554	554	490	526	24,5
CEST6	820	600	800	550	750	554	754	490	526	



250mm depth boxes



Characteristics

Enclosure and door manufactured from 1.5mm sheet steel.
Flat mounting plate manufactured from 2.5mm.

Paint finish

CE-TEK standard epoxy polyester powder coating.
Enclosure and door RAL 7032 textured finish.

Supply includes

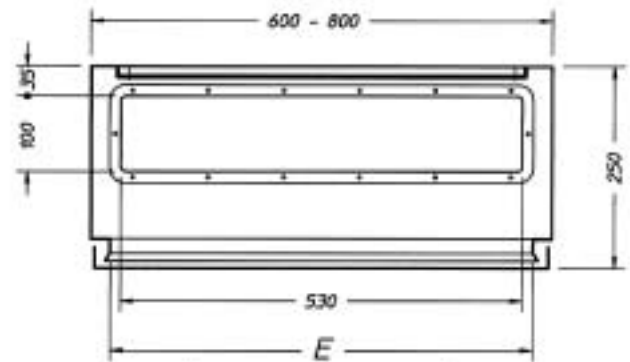
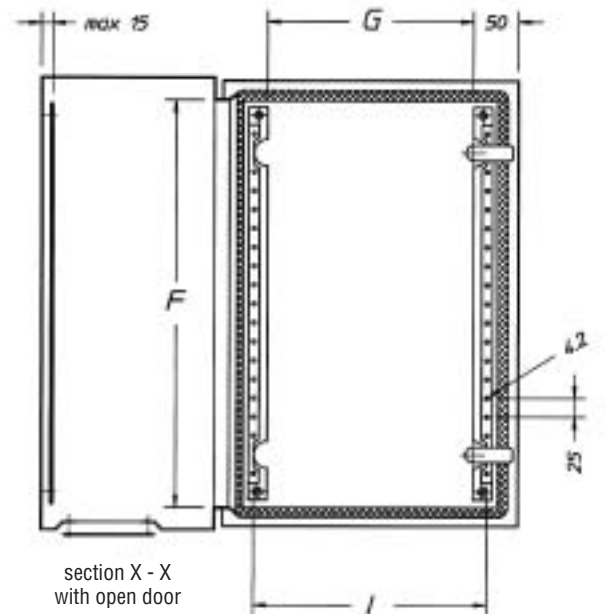
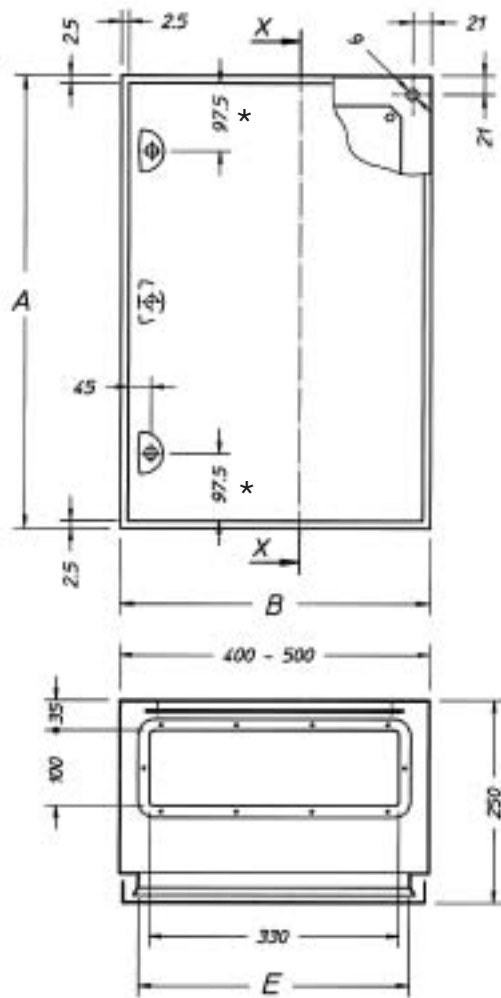
- box
- 2 zincpassivated rails to be fixed on the door
- mounting plate
- gland plate with sealing gasket
- locking system with Ø 3mm double bar key
- screws for earthing
- mounting accessories.

Conformity and approval

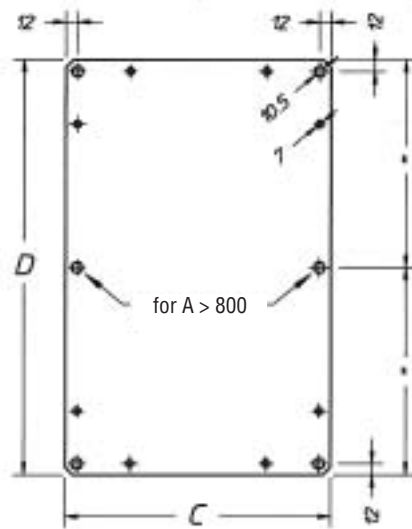


Protection degree

- IP 65 complying with EN50298; EN60529
- type 12, 4, 4X complying with UL508A; UL50
- impact resistance IK10 complying with EN500298; EN50102.



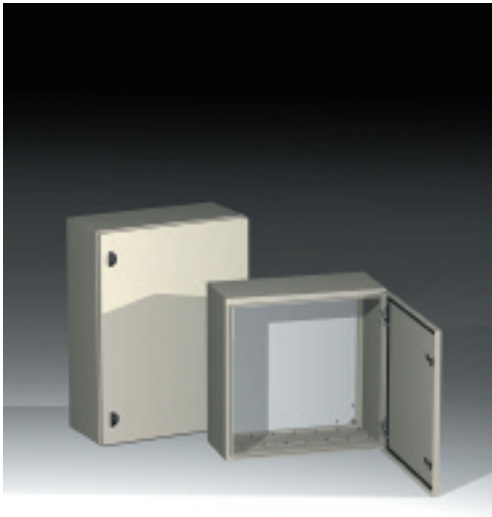
* 197,5 per $A \geq 1000$
 [Symbol] central lock for $A < 600$



code		B	A	C	D	E	F	G	I	weight kg
mod.	art.									
CEST4	525	400	500	350	450	354	454	290	326	18
CEST4	625	400	600	350	550	354	554	290	326	20,5
CEST5	725	500	700	450	650	454	654	390	426	27
CEST6	825	600	800	550	750	554	754	490	526	34
CEST6	1025	600	1000	550	950	554	954	490	526	43,5



300mm depth boxes



BOXES WITH STANDARD LOCKING SYSTEM

Enclosure and door manufactured from 1.5mm sheet steel.
Door manufactured from 1.5mm sheet steel up to ST6-830 model;
door manufactured from 2mm sheet steel for models from ST6-1030 to ST6-1230.
Mounting plate with folded edges (flat mounting plate for ST6-430/630 models),
manufactured from 2.5mm sheet steel.

Paint finish

CE-TEK standard epoxy polyester powder coating.
Enclosure and door RAL 7032 textured finish.

Supply includes

- box
- 2 zincpassivated rails to be fixed on the door
- mounting plate
- gland plate with sealing gasket
- locking system with \varnothing 3mm double bar key
- screws for earthing
- mounting accessories.

Certifications



Protection degree

- IP 65 complying with EN50298; EN60529
- type 12, 4, 4X complying with UL508A; UL50
- impact resistance IK10 complying with EN500298; EN50102.



BOXES 1400MM HIGH WITH ROD SYSTEM

Enclosure manufactured from 1.5mm sheet steel.
Door manufactured from 2mm sheet steel.
Flat mounting plate with folded edges.

Paint finish

CE-TEK standard epoxy polyester powder coating.
Enclosure and door RAL 7032 textured finish.

Supply includes

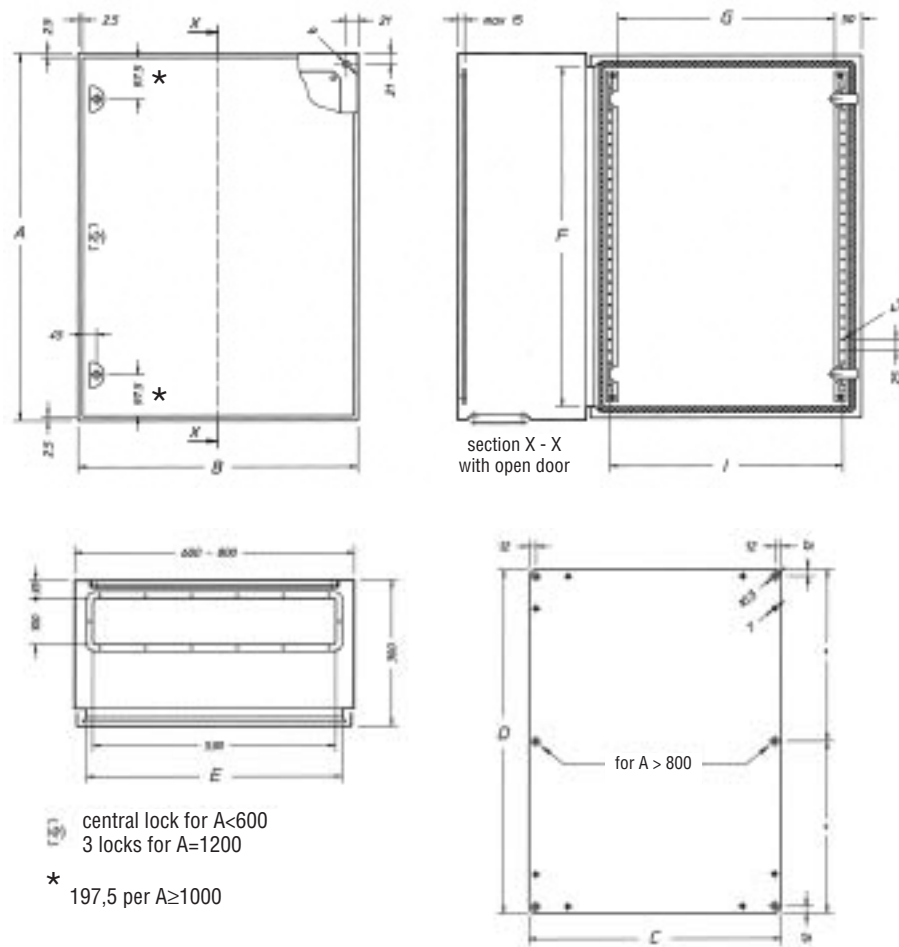
- box
- 2 zincpassivated rails to be fixed on the door
- mounting plate
- gland plate with sealing gasket
- locking system with \varnothing 3mm double bar key
- screws for earthing
- mounting accessories.

Certifications



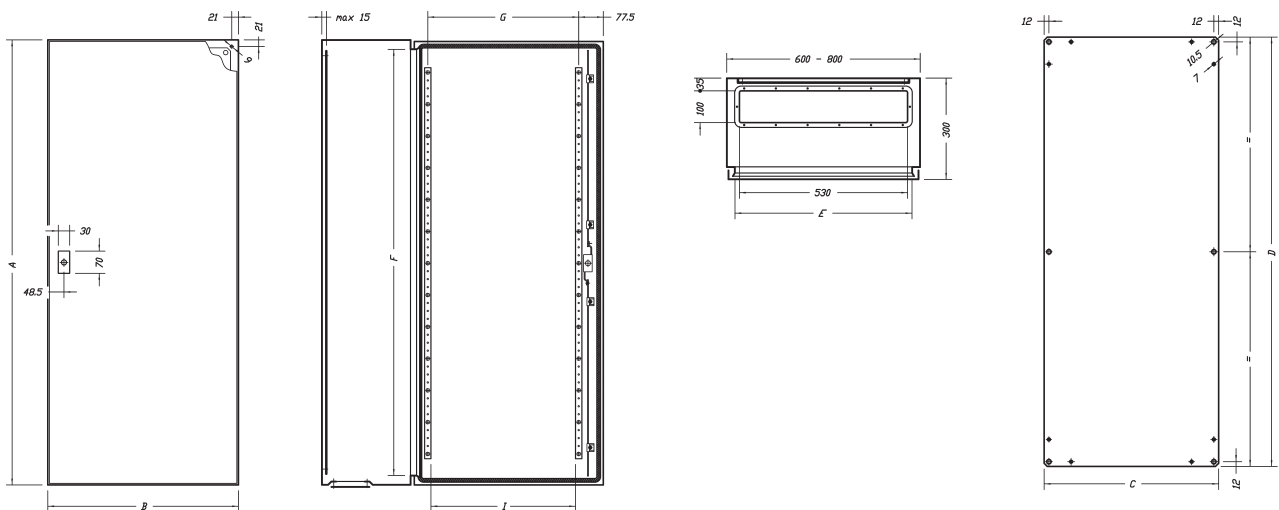
Protection degree

- IP 65 complying with EN50298; EN60529
- type 12, 4, 4X complying with UL508A; UL50
- impact resistance IK10 complying with EN500298; EN50102.



boxes with standard locking system

code		B	A	C	D	E	F	G	I	weight kg
mod.	art.									
CEST6	430	600	400	550	350	554	354	490	526	23
CEST6	630	600	600	550	550	554	554	490	526	30
CEST6	830	600	800	550	750	554	754	490	526	37
CEST6	1030	600	1000	550	950	554	954	490	526	47
CEST6	1230	600	1200	550	1150	554	1154	490	526	54
CEST8	830	800	800	750	750	754	754	690	726	48
CEST8	1030	800	1000	750	950	754	954	690	726	58
CEST8	1230	800	1200	750	1150	754	1154	690	726	67

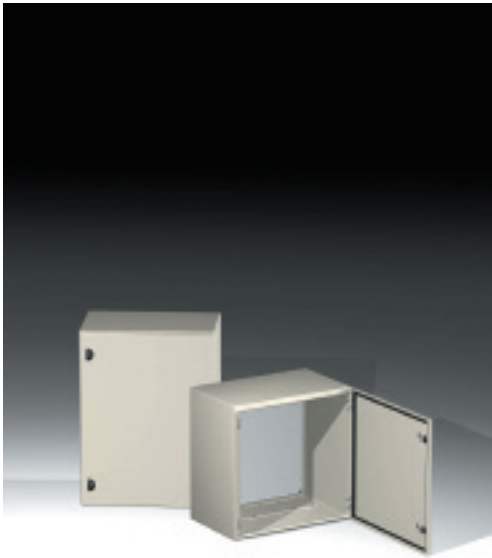


boxes with rod system

code		B	A	C	D	E	F	G	I	weight kg
mod.	art.									
CEST6	1430	600	1400	550	1350	554	1354	490	526	63
CEST8	1430	800	1400	750	1350	754	1354	690	726	84



400mm depth boxes



Characteristics

Enclosure and door manufactured from 1.5mm sheet steel.
Door manufactured from 2mm sheet steel only for ST6-1040.
Flat mounting plate manufactured from 2.5mm.

Paint finish

CE-TEK standard epoxy polyester powder coating.
Enclosure and door RAL 7032 textured finish.

Supply includes

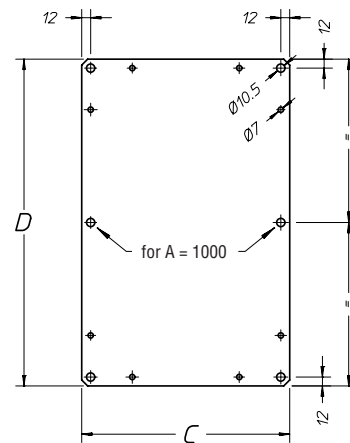
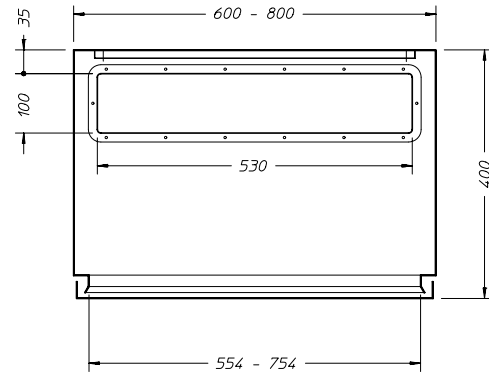
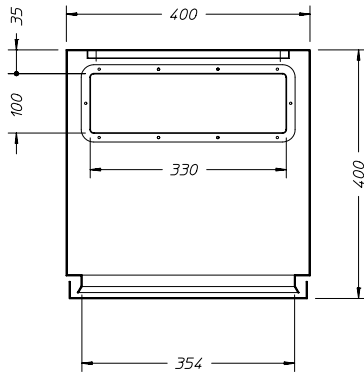
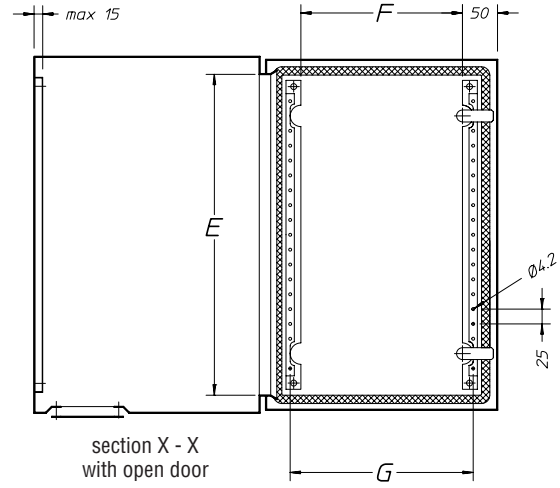
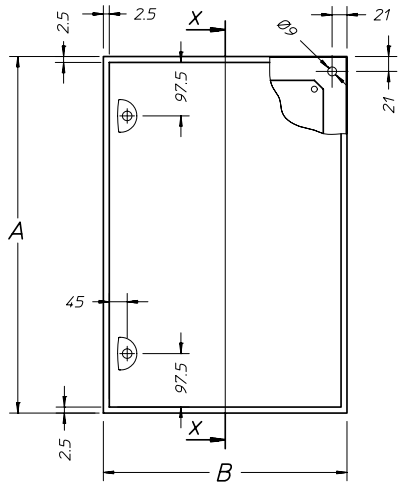
- box
- 2 zincpassivated rails to be fixed on the door
- mounting plate
- gland plate with sealing gasket
- locking system with Ø 3mm double bar key
- screws for earthing
- mounting accessories.

Conformity and approval



Protection degree

- IP 65 complying with EN50298; EN60529
- type 12, 4, 4X complying with UL508A; UL50
- impact resistance IK10 complying with EN500298; EN50102.



code		B	A	C	D	E	F	G	weight kg
mod.	art.								
CEST4	640	400	600	350	550	554	290	326	36
CEST6	640	600	600	550	550	554	490	526	36
CEST6	840	600	800	550	750	754	490	526	46
CEST6	1040	600	1000	550	950	954	490	526	56
CEST8	840	800	800	750	750	754	690	726	52
CEST8	1040	800	1000	750	950	954	690	726	62



double door boxes



Characteristics

Enclosure and door manufactured from 1.5mm sheet steel.
Flat mounting plate manufactured from 2.5mm.

Paint finish

CE-TEK standard epoxy polyester powder coating.
Enclosure and door RAL 7032 textured finish.

Supply includes

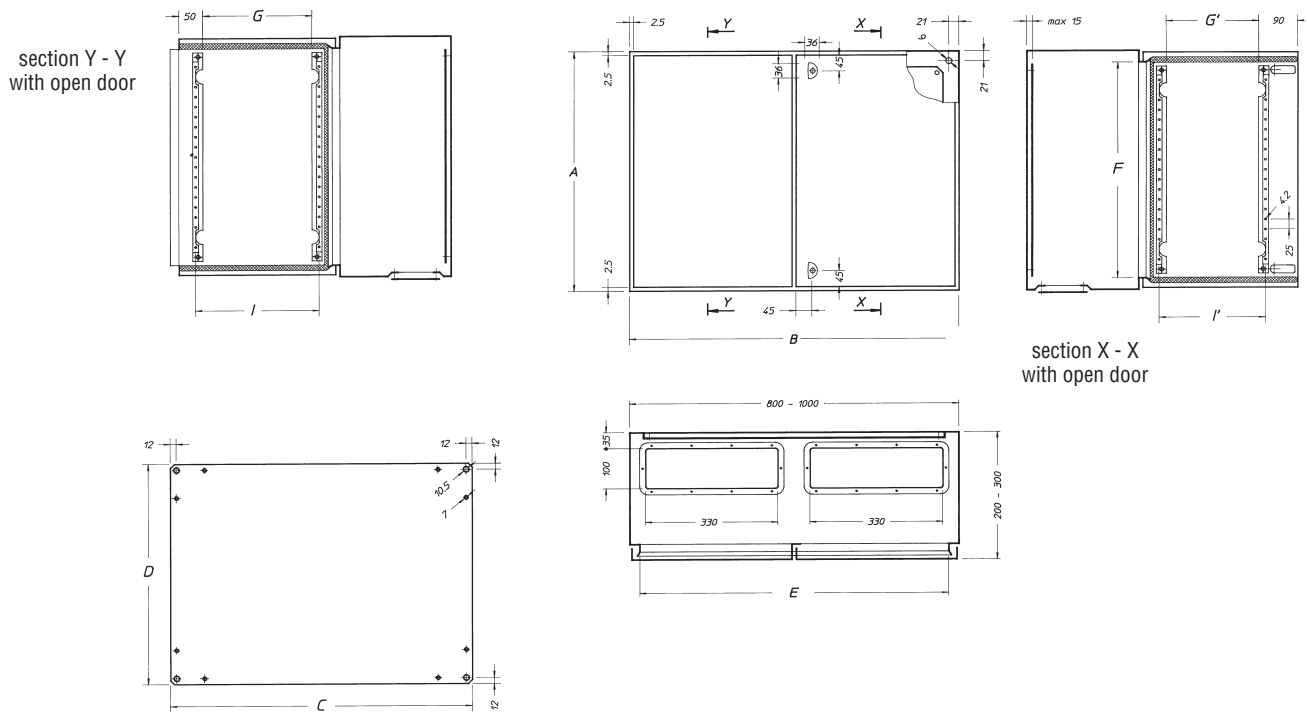
- box
- 2 zincpassivated rails to be fixed on the door
- mounting plate
- gland plate with sealing gasket
- locking system with Ø 3mm double bar key
- screws for earthing
- mounting accessories.

Conformity and approval



Protection degree

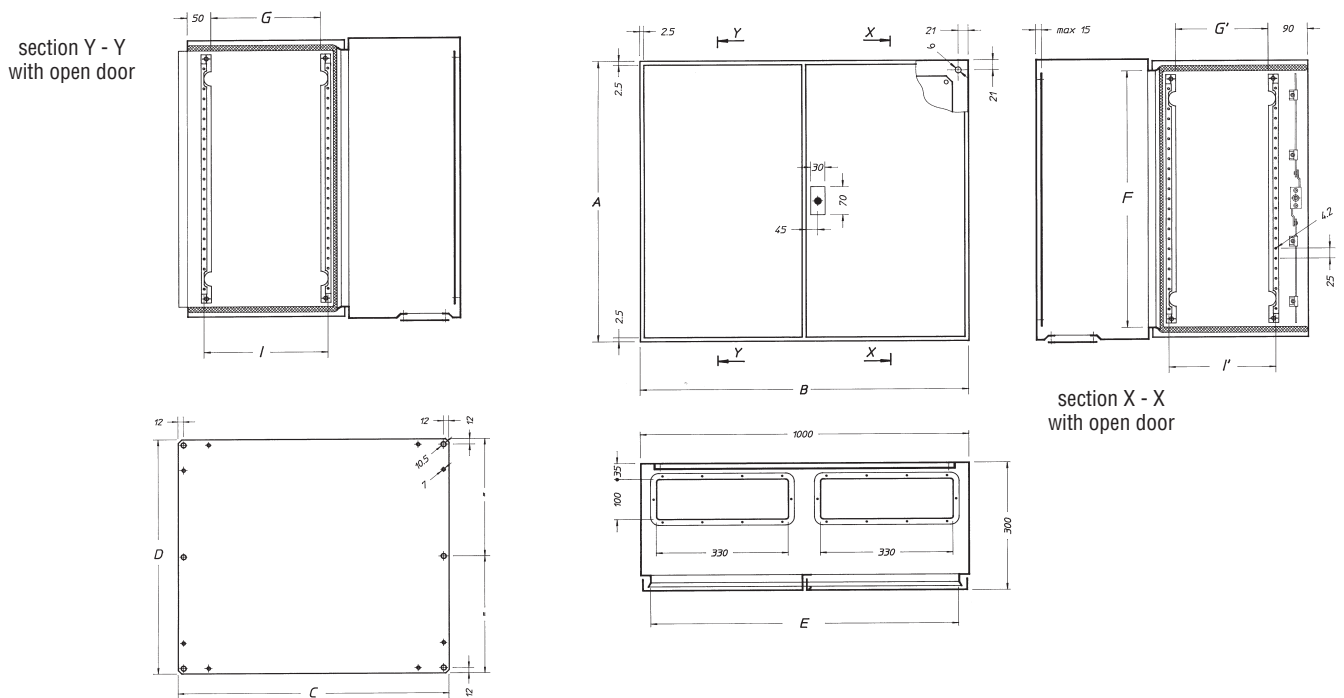
- IP 55 complying with EN50298; EN60529
- type 12, 4, 4X complying with UL508A; UL50
- impact resistance IK10 complying with EN500298; EN50102.



double door boxes with standard locking system

code		B	A	C	D	E	F	G	G'	I	I'	weight kg
mod.	art.											
CEST8*	630	800	600	750	550	754	554	290	250	326	286	37
CEST10	820	1000	800	950	750	954	754	390	350	426	386	51
CEST10	830	1000	800	950	750	954	754	390	350	426	386	58

* One gland plate - 530 x 100



double door boxes with rod system

code		B	A	C	D	E	F	G	G'	I	I'	weight kg
mod.	art.											
CEST10	1030	1000	1000	935	950	954	954	390	350	426	386	69
CEST10	1230	1000	1200	935	1150	954	1154	390	350	426	386	80
CEST10	1430	1000	1400	935	1350	954	1354	390	350	426	386	95
CEST12	1230	1200	1200	1135	1150	1154	1154	490	450	526	486	100